

# 4H Swine Record Book



## Ages 13-19



|  |  |   |                                |
|--|--|---|--------------------------------|
| Name   |  |   |                                |
| Age<br>(as of Jan. 1st)                            |  | Number of years<br>in Swine Project   |                                |
| Swine Project<br>Animal Name                       |  | Number of Years<br>in 4H  |                                |
| Your Address                                       |  |   |                                |
| Swine project address<br>(if different from above) |  |   |                                |
| Main Phone   |  | Alternate phone   |                                |
| Your Email   |  |   |                                |
| Parent/Guardian Names                              |  |   |                                |
| Parent/Guardian Address                            |  |   |                                |
| Parent/Guardian Phone                              |  | Alternate phone   |                                |
| Parent/Guardian Email                              |  |   |                                |
| 4H Club Name                                       |  |   |                                |
| 4H Club Leader Name                                |  | 4H Leader Phone   |                                |
| 4H Club Leader Email                               |  |   |                                |
| Start Date for Record Book                         |  | End Date for Record Book  |                                |
| Buyer's Name                                       |  | Completed Record Book DUE<br>to Species Chair<br>at Livestock Council Meeting | By Monday<br>9/9/2024 11:59pm  |
| Thank you Note<br>Delivered/Sent<br>to Buyer       |  | Thank You Note Copy DUE<br>to Species Chair<br>at Livestock Council Meeting   | By Monday<br>10/7/2024 11:59pm |

## Why Keep A Record Book?

- It is required for your 4H market project.
- It is helpful to track progress with your 4H market or show-only project
- Record books help you learn more about your project animal(s) including costs, feed, health, and management skills.
- Keeping a record book documents activities and shows your knowledge about your project.
- Records of your project improve management and production practices.
- A completed record book will help you plan future projects.
- Record books are helpful when applying for 4-H awards and scholarships. Be sure to include all awards and recognitions you receive throughout your 4-H year.
- Keep this record book as a part of your personal 4-H records.

## How to Keep A Record Book: (check boxes when complete)

- Records start with the possession of your animal and end with Fair week.
- Write neatly and clearly.
- Attach required pictures:
  - Must include a START picture of you and your swine project.
  - Must include a FINISH picture of you and your swine project.
  - Include as many pictures as you like to share your progress with your project, the more the better! Use picture captions to tell your project story.
- REQUIRED: Include a report one of the following swine topics of at least one page:
  - Proper care and Nutrition of Swine
  - Swine Project Selection
  - Judging: Swine
  - Veterinary Science: Health and Diseases of Swine
  - Interview a breeder or another professional dealing in the field of your chosen project animal asking everything you ever wanted to know and write up a one page Q&A. Think outside the box and be creative! This is your record book, be you!

## **Additional Swine information**

### *Michigan 4H Swine Snapshot*

[https://www.canr.msu.edu/uploads/234/42274/snapshots/MI-4-HSwineSnapshot.pdf?language\\_id=1](https://www.canr.msu.edu/uploads/234/42274/snapshots/MI-4-HSwineSnapshot.pdf?language_id=1)

### *Your 4- H Market Hog Project*

[https://www.canr.msu.edu/uploads/234/43182/Bulletin-4H1064-market\\_hog.pdf](https://www.canr.msu.edu/uploads/234/43182/Bulletin-4H1064-market_hog.pdf)

### *Learning Kits - Available from your MSU Extension office*

- 4-H Skills for Life Swine Series
- Swine Learning Lab Kit

## Project Information

Swine project Date of birth: \_\_\_\_\_

Swine Project Start Date: \_\_\_\_\_

\*The start of the project will be the day you placed your swine on feed.

Swine project Finish Date: \_\_\_\_\_

\*The end of the project will be the day of weigh in at fair.

### Swine Project Details

| Last four digits of #840 Ear Tag Number   | Sex | Date Purchased | Breed & Color | Sold/Kept/Died | Purchase Price |
|---|-----|----------------|---------------|----------------|----------------|
|   |     |                |               |                | \$             |
|   |     |                |               |                | \$             |
| Total Purchase Price for swine project(s) |     |                |               |                | \$             |

### Monthly Feed Record

| Month  | Type of feed used example:<br>"corn mix, 18% protein" | Pounds of feed per month | Monthly Cost of feed |
|--------|---|--------------------------|----------------------|
| April  |   |                          | \$                   |
| May    |   |                          | \$                   |
| June   |   |                          | \$                   |
| July   |   |                          | \$                   |
| August |   |                          | \$                   |
| Total  |   |                          | \$                   |

### Expenses Other Than Feed

| Item                            | April | May | June | July | August | Totals |
|---------------------------------|-------|-----|------|------|--------|--------|
| Veterinary Fees                 |       |     |      |      |        |        |
| Bedding                         |       |     |      |      |        |        |
| Fair Fees                       |       |     |      |      |        |        |
| Pictures at Fair<br>\$12.00     |       |     |      |      |        |        |
| Beef/Pork Boards Fee<br>(.004%) |       |     |      |      |        |        |
| 4-H Council Adm.<br>Fee (.05%)  |       |     |      |      |        |        |
| Other Expenses                  |       |     |      |      |        |        |
| <b>Totals</b>                   |       |     |      |      |        |        |

### Income from Project

| Month of Fair | Weight<br>of Swine at Fair | Sale PRICE<br>per Pound at Auction | INCOME<br>(weight x price) |
|---------------|----------------------------|------------------------------------|----------------------------|
| AUGUST        |                            |                                    | \$                         |

### Financial Summary (fill in totals from above)

|                                   |    |  |   |      |
|-----------------------------------|----|--|---|------|
| Purchase Price of<br>Your Swine   | \$ |  | Income from Project<br>(from table above)     | \$   |
| Total Feed Cost                   | \$ |  | Total Expenses<br>(bottom left of this table) | – \$ |
| Total Expenses<br>other than Feed | \$ |  |   |      |
| Total Expenses                    | \$ |  | <b>Net Profit or Loss</b>                     | \$   |

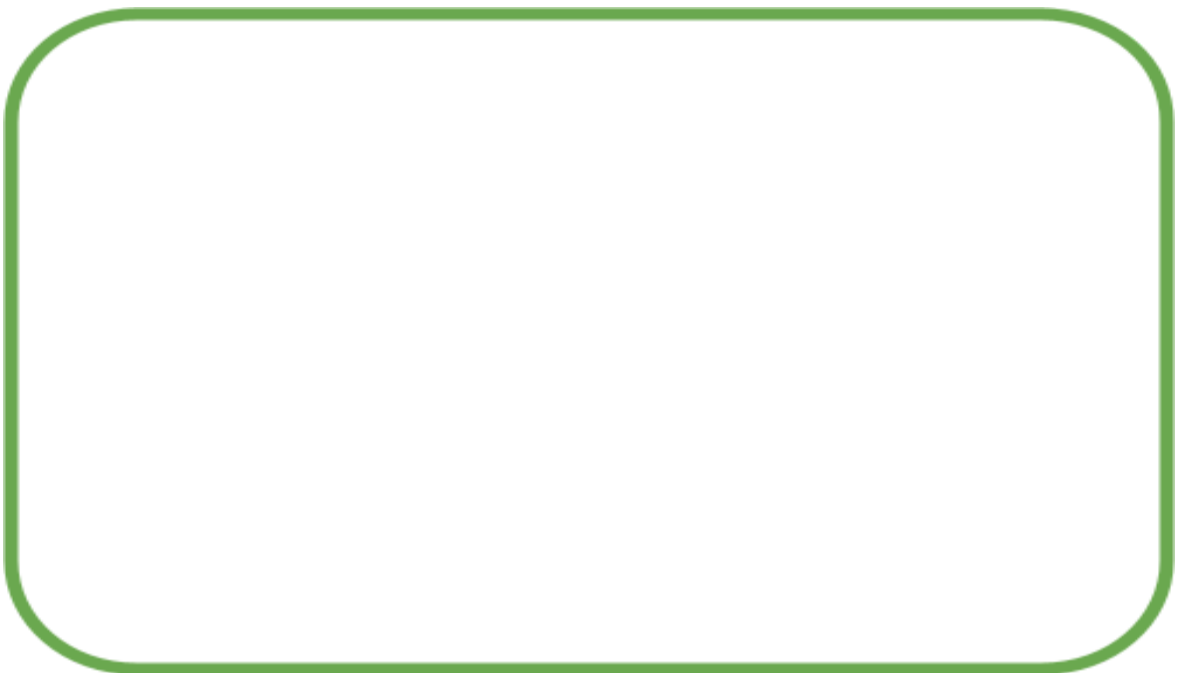
## **Project Pictures**

- Pictures are a required part of this Record Book.
- Taking pictures of your swine throughout the project will show you how your swine project has grown and developed.
- Remember, pictures are nicer when YOU are in the picture too!
- Add more pages for your pictures on a separate piece of paper or in a folder.

### **Paste First Photo Here**



### **Paste Ending Photo Here**



## My Swine Project

1. What can you do to improve with your future market livestock project?

---

---

---

---

2. What information did you learn this year in 4H that you see yourself using in the future?

---

---

---

---

3. What was your favorite part about raising your swine project? What did you NOT like about your swine project?

---

---

---

---

4. What would you tell your teachers, friends or others about your swine project?

---

---

---

---

5. Please list the 4H club duties that you are responsible for, or that you hope to be responsible for in the future?

---

---

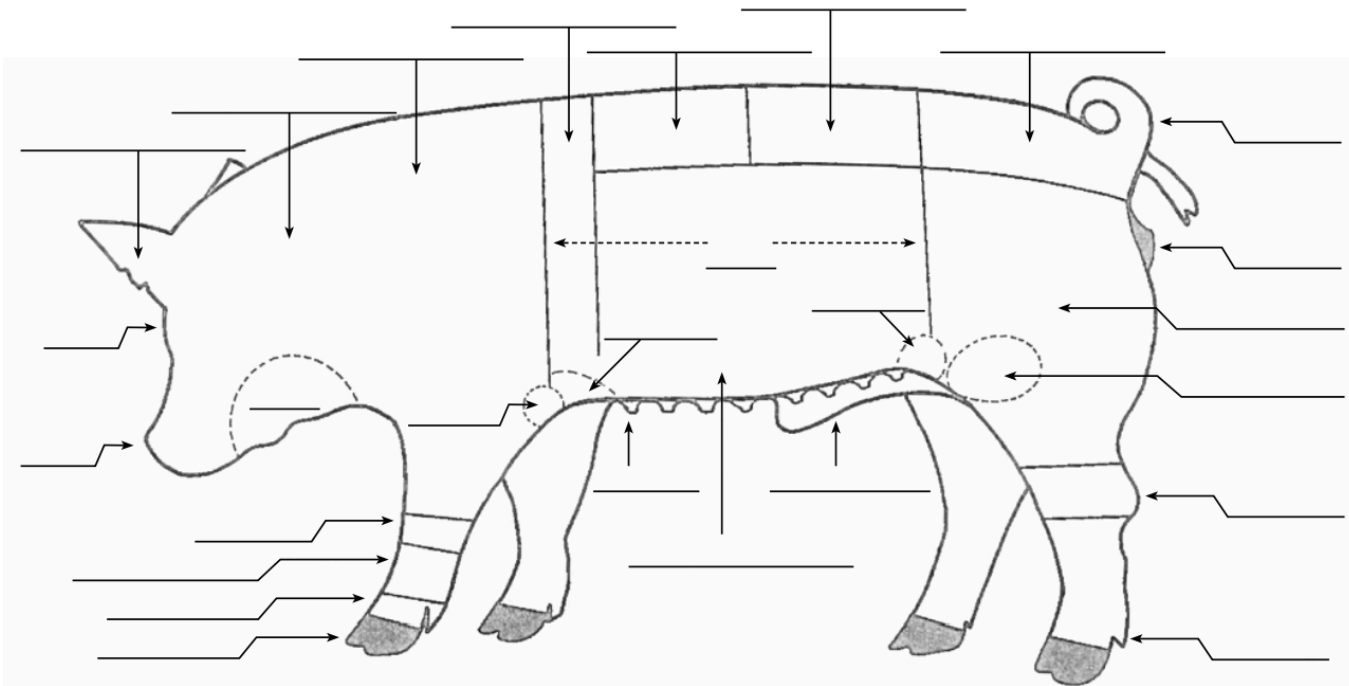
---

---

# PARTS OF A HOG

Label the parts of a swine in the spaces provided.  
Use the list at the right to fill in the blanks.

|              |                          |            |             |
|--------------|--------------------------|------------|-------------|
| Neck         | Vulva ( <i>Gilt</i> )    | Teats      | Pastern     |
| Shoulder     | Ham                      | Rear flank | Foot (Toes) |
| Forerib Area | Stifle Joint             | Side       | Jowl        |
| Back         | Hock                     | Fore flank | Snout       |
| Loin         | Dewclaw                  | Elbow      | Head        |
| Rump         | Sheath ( <i>Barrow</i> ) | Knee       |             |



### Swine Project Report - REQUIRED:

Include a report on ONE of the following swine topics of at least one page:

- Proper care and Nutrition of Swine
- Swine Project Selection
- Judging: Swine
- Veterinary Science: Health and Diseases of Swine
- Interview a breeder or another professional dealing in the field of your chosen project animal asking everything you ever wanted to know and write up a one page Q&A. Think outside the box and be creative! This is your record book, be you!

---

---

---

---

---

---

---

---

---

---

---

---

---

---

---

---

---

---

---

---

---

---

---

---

---

---

---

---

---

---